



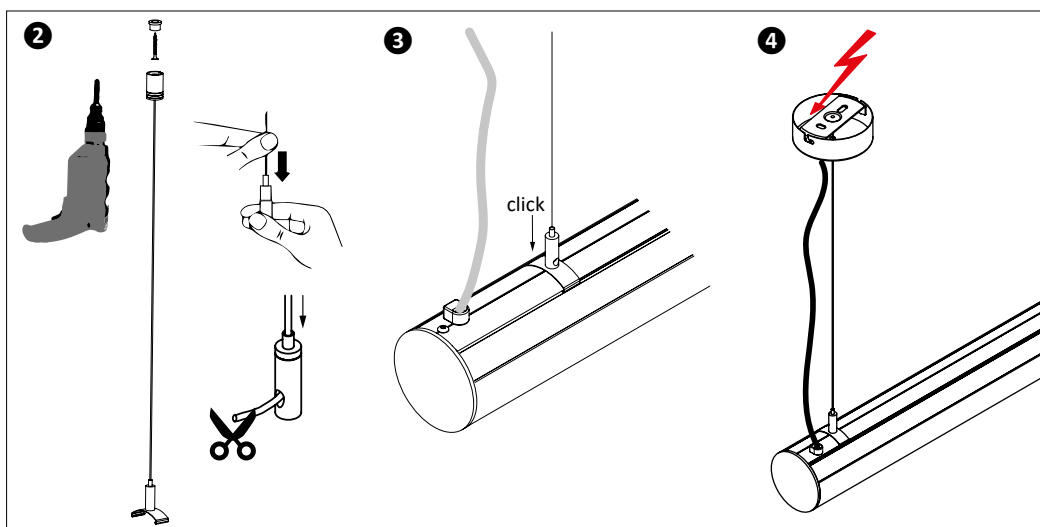
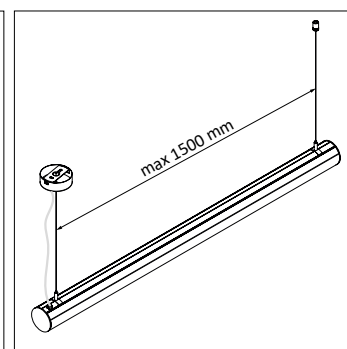
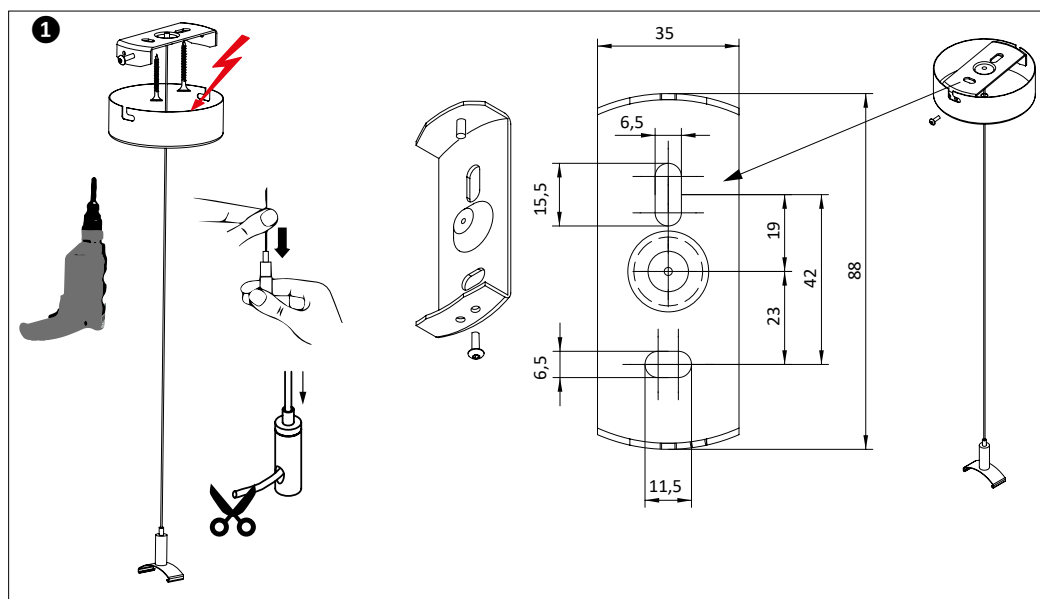
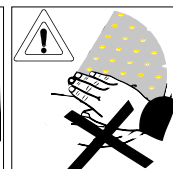
Diese Leuchte enthält eine Lichtquelle der Energieeffizienzklasse C  
This lamp contains a light source of energy efficiency class C

C

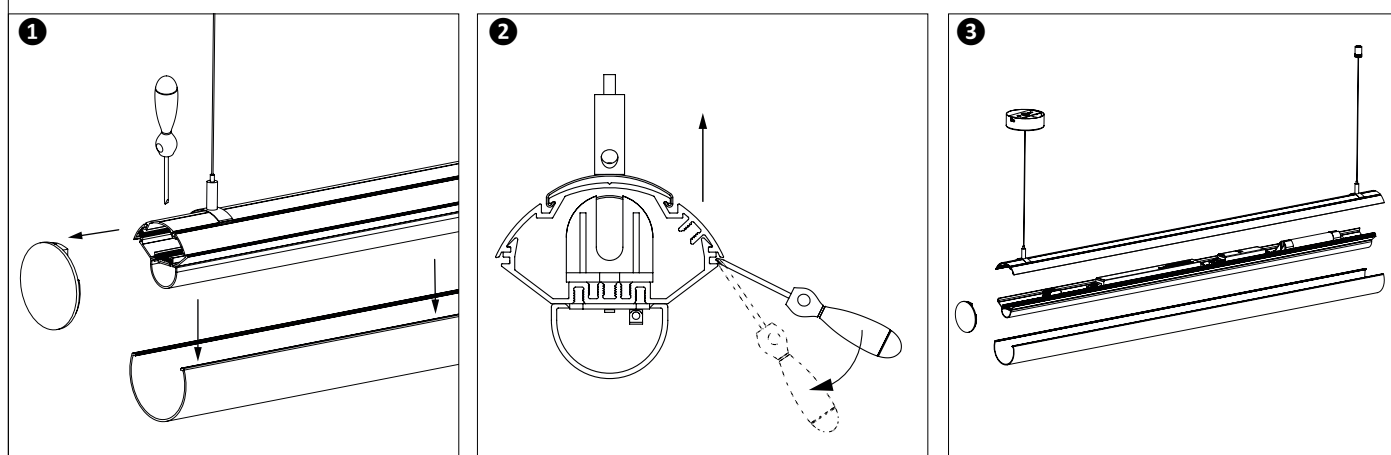
155-XXXX-XXX-XXX

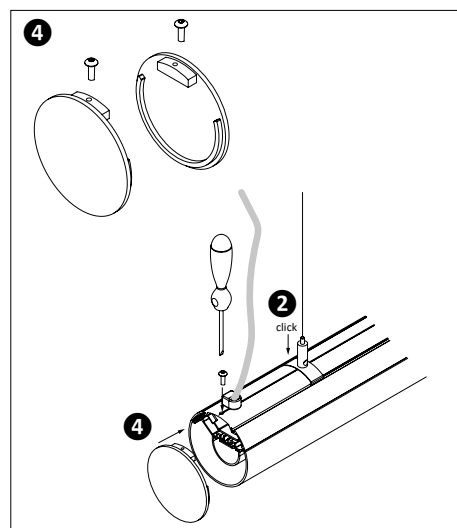
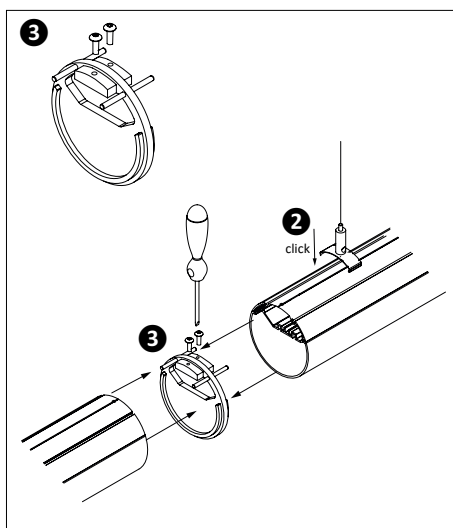
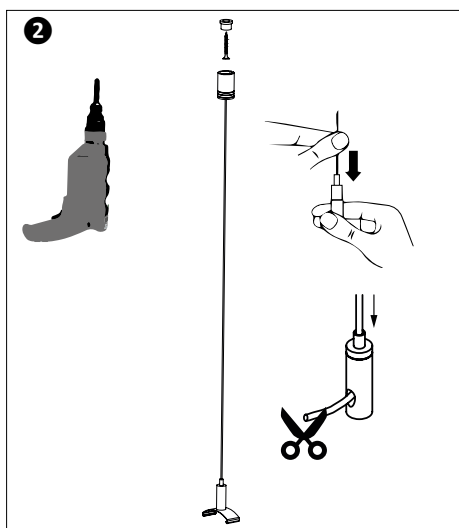
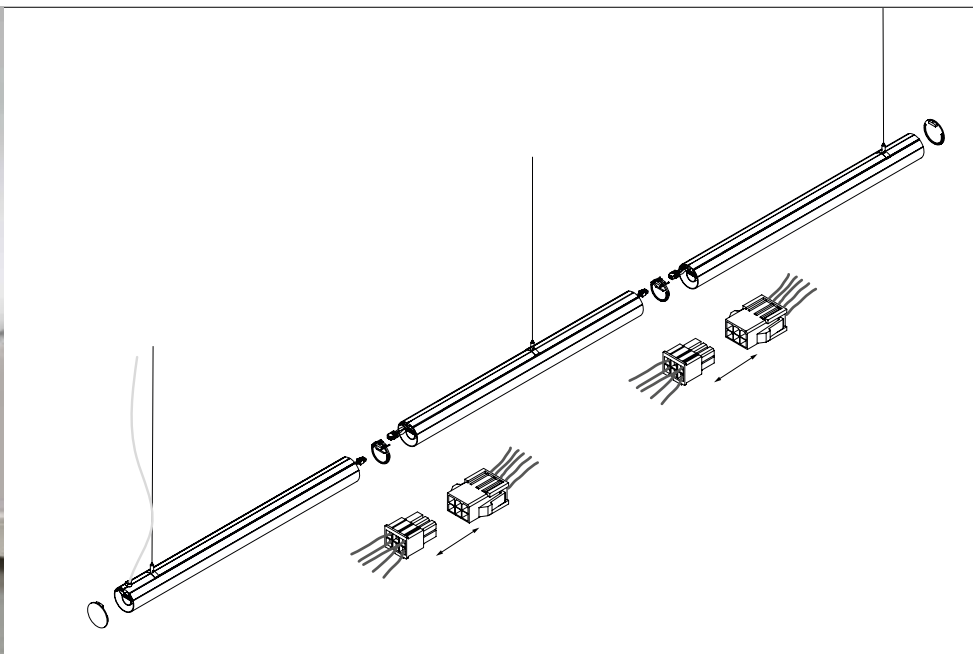
155-001-XXX

155-002-XXX



## DEMONTAGE | DISMANTLING





| Klemme   Terminal | Farbe   Colour                 | Kabel   Cable                  | schaltbar   switchable                | 2-fach schaltbar   fold switchable      | Notlicht 1h/3h Batterie schaltbar   EM light with 1h/3h battery switchable | 5-polige Anschlussklemme   5-pin connection cable |
|-------------------|--------------------------------|--------------------------------|---------------------------------------|---|--|---|
| 3                 | L                              | weiß oder grau   white or grey | (A) Netz geschaltet   switched supply | direkter Lichtanteil   direct light     |  |   |
| N                 | blau   blue                    | (N) Neutralleiter   neutral    | Neutralleiter   neutral               | Neutralleiter   neutral                 | Neutralleiter   neutral  |   |
| ⏚                 | grün-gelb   green-yellow       | (⏚) PE   ground                | PE   ground                           | PE   ground                             | PE   ground  |   |
| 1                 | D+                             | schwarz   black                | (C) Netz   mains                      |   | Netz   mains   |   |
| 2                 | D-                             | braun   brown                  | (B) Netz geschaltet   switched supply | indirekter Lichtanteil   indirect light | Netz geschaltet   switched supply  |   |
| Klemme   Terminal | Farbe   Colour                 | Kabel   Cable                  | DALI                                  | 1-10 V                                  | Notlicht 1h/3h Batterie & DALI   EM light with 1h/3h battery & DALI        |   |
| L                 | weiß oder grau   white or grey | (A) Netz   mains               | Netz   mains                          | Netz   mains                            | Netz   mains & charging battery  |   |
| N                 | blau   blue                    | (N) Neutralleiter   neutral    | Neutralleiter   neutral               | Neutralleiter   neutral                 | Neutralleiter   neutral  |   |
| ⏚                 | grün-gelb   green-yellow       | (⏚) PE   ground                | PE   ground                           | PE   ground                             | PE   ground  |   |
| D1+ DA+ D+        | schwarz   black                | (C) DALI                       | DALI                                  | + Pol 1-10 V                            | DALI   |   |
| D2- DA- D-        | braun   brown                  | (B) DALI                       | DALI                                  | - Pol 1-10 V                            | DALI   |   |

**D** Beiliegende Sicherheitshinweise sind unbedingt einzuhalten. Technische Änderungen vorbehalten. Montageanleitung aufbewahren.

**GB** The enclosed directions for safety must be observed. We reserve the right to make technical modifications. Retain the operating instructions.

**F** Le respect des instructions de sécurité ci-jointes est impératif. Sous réserve de modifications techniques. Conserver le mode d'emploi.

**NL** De bijgevoegde veiligheidsinstructies moeten in acht genomen worden. Technische wijzigingen voorbehouden. Bewaar de gebruiksaanwijzing.

**E** Deben observarse las instrucciones de seguridad adjuntas. Cambios técnicos reservados. Conserve las instrucciones de montaje.

**I** Osservare le segnalazioni di sicurezza allegate. Modifiche tecniche riservate. Conserva le istruzioni di montaggio.

**S** Bifogade säkerhetsanvisningar måste beaktas noggrant. Tekniska ändringar förbehålles. Spara bruksanvisningen.

**TR** Ekteki Emniyet Kurallarına kesinlikle uyunuz. Teknik değişiklikler saklıdır. Montaj talimatlarını saklayın.