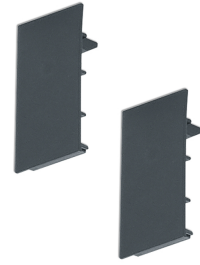


## STRONG 30

S30-8200-38

The rail system - endless options with a filigree look and quick installation

**Design:** linear  
**Design Version:** Enddeckel  
**wall mounting:** available  
**ceiling mounting:** available  
**pendant mounting:** available  
**surface mounting:** available  
**track mounting:** available  
**colour:** black  
**Width [mm]:** 30  
**Height/depth [mm]:** 54



The filigree STRONG 30 system integrates perfectly into the architecture thanks to its minimal dimensions. Despite its small dimensions, the 48V rail system impresses with its powerful and, at the same time, glare-free light for general and excellent accent lighting.

2 colours - white matt (similar to RAL 9016) or black matt (similar to RAL 9005)

**Type:** LINEAR  
**light symmetry:** symmetrical  
**control:** DALI  
**Stand:** 05.12.2022